



ABPM50

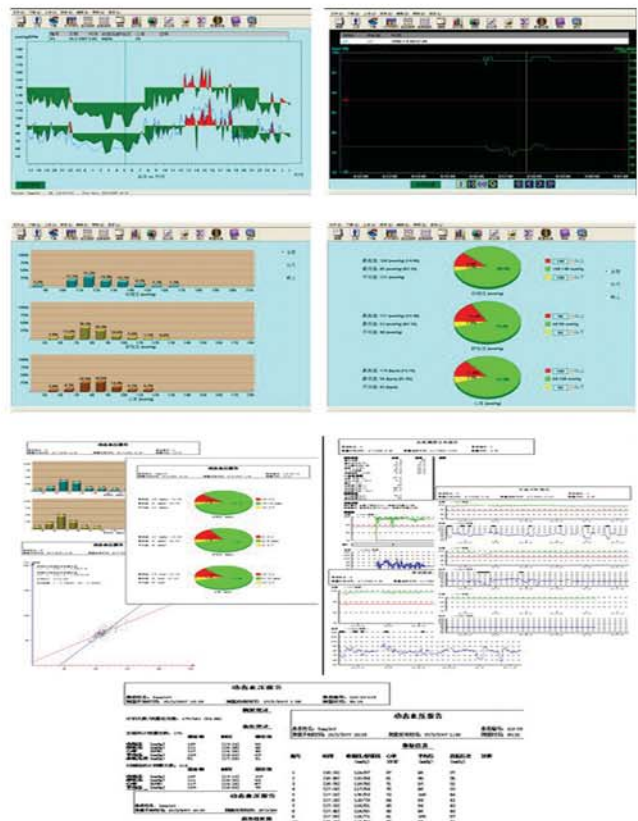
Ambulatory Blood Pressure Monitor



+ Features

- Transfer data to PC-based Software via USB port, accurate analysis systems.
- 2.4" TFT display, 320x240 pixel.
- Up to 300 items of memory for common user and 358 for Ambulatory Blood Pressure Monitoring user
- Clinically proven accuracy
- Automatic cuff inflation and deflation
- Reliable power supply with 2 AA batteries
- Battery status indicator
- Portable design
- Measurement Range: 0mmHg~280mmHg
- Accuracy: ± 3 mmHg
- Resolution: 1mmHg
- Measurement item: SYS/DIA/MAP/PR

+ Software Screenshots



+ Technical Specifications

- Measurement method: Oscillometry
- Operation model: Manual/Automatic/STAT
- Measurement unit: mmHg/KPa selectable
- Measurement types: Systolic, Diastolic, Mean
- Measurement range:
 - Adult pressure: 10 to 270 mmHg; Pulse rate: 30 to 220;
 - Pediatric pressure: 10 to 200 mmHg; Pulse rate: 30 to 220;
 - Neonate pressure: 10 to 135 mmHg; Pulse rate: 30 to 220
- Resolution: 1 mmHg
- Over-pressure protection: Yes
- Input/output: USB2.0
- Accuracy: Pulse rate: $\pm 2\%$ or ± 3 BPM which is greater
- Blood pressure :Meets ANSI/AAMI SP10-1992
- Safety: Independent safety microprocessor monitors cuff pressure, measurement time as well as the operation of the main microprocessor

+ Accessories



Cuff